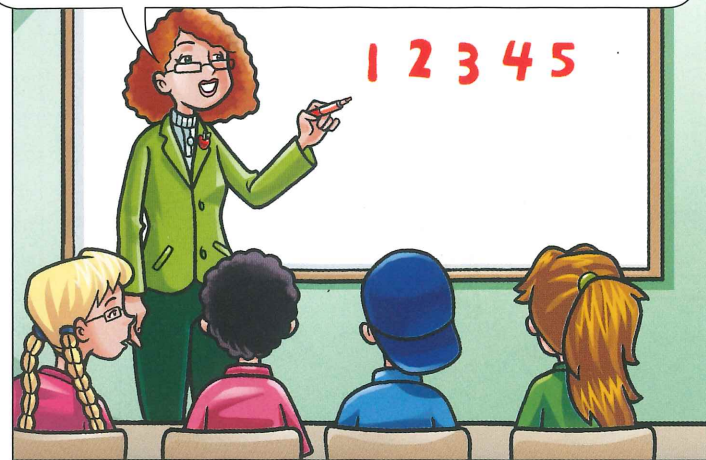


CD1  
2 Listen and repeat.

Please number your papers from one to five. We're going to have a spelling test.

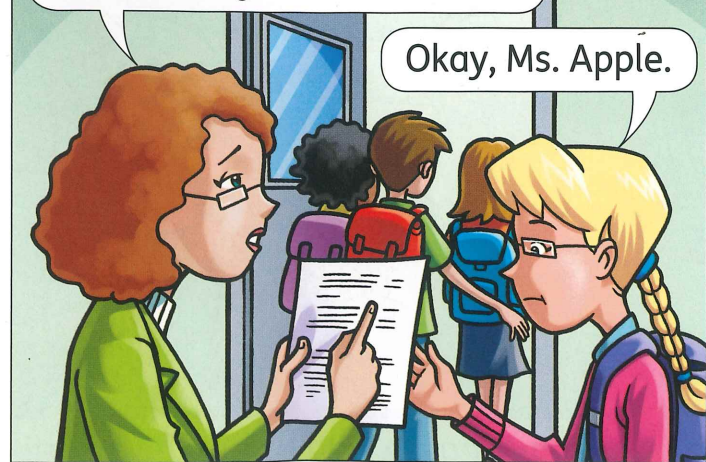


What's the homework assignment for tomorrow?



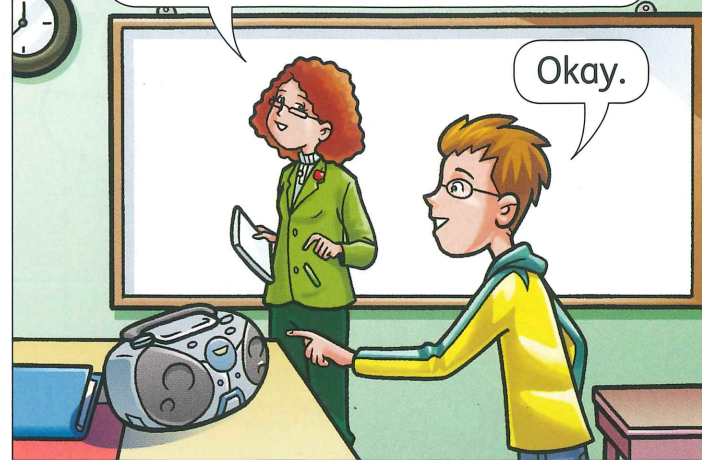
Do page three in your workbook.

Annie, please stay after class and finish your homework.



Okay, Ms. Apple.

Joe, will you turn on the CD player, please? Go to track ten.



Okay.

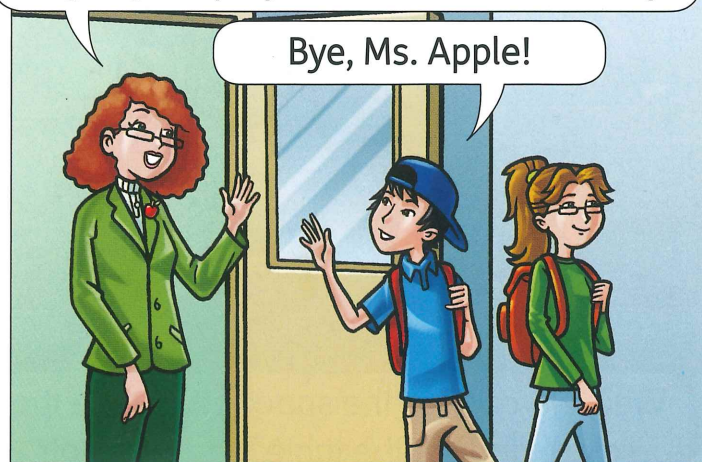
We're going on a field trip on Friday. Please ask your parents to sign your permission form.



Where are we going?

The History Museum.

Have a good weekend, class! Don't forget, your projects are due on Monday.



Bye, Ms. Apple!



# In Old Sunnyville

## Conversation Time

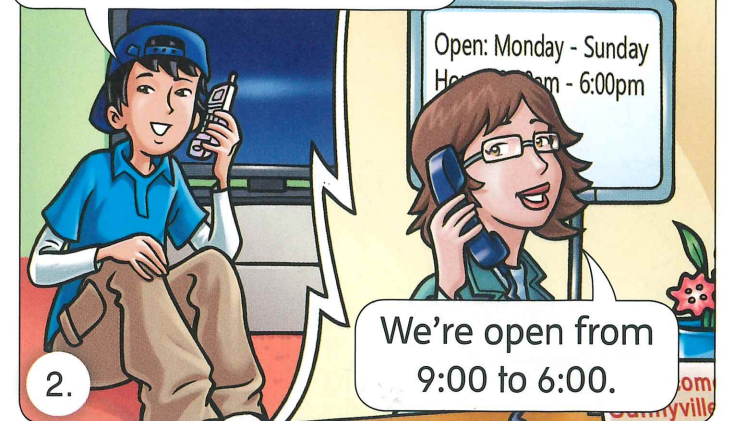
A. CD1  
3 Listen and repeat. Point to the speakers. Then listen again.



1.

Good morning, Sunnyville Museum. How can I help you?

Hi! What are your hours?



2.

We're open from 9:00 to 6:00.

Are you open on Sundays?



3.

Yes. We're open daily, except on holidays.

How much does it cost to get in?



4.

It's three dollars for adults and two dollars for children. Children under five are free.

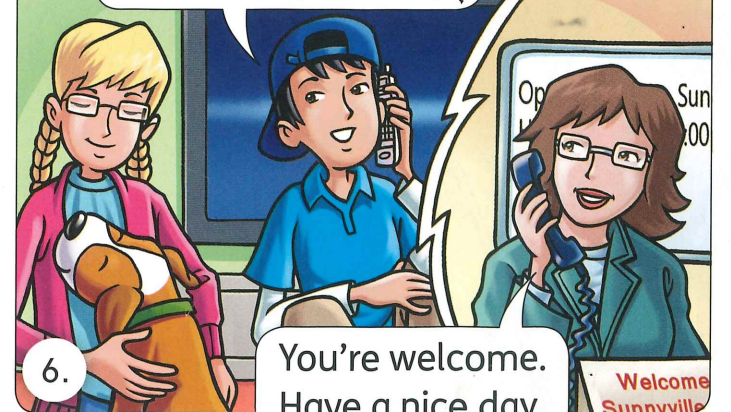
Does that include the special photo exhibit of old Sunnyville?



5.

Yes, it does. Tours are at 10:00, 2:00, and 5:00.

Thanks for your help.



6.

You're welcome. Have a nice day.

B. Role-play the conversation.



A.  <sup>CD1</sup> Listen and repeat.

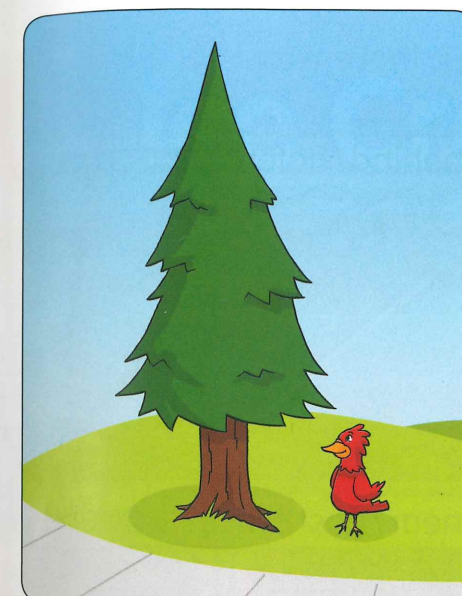
- |                |                  |
|----------------|------------------|
| 1. school      | 2. library       |
| 3. barbershop  | 4. bank          |
| 5. hotel       | 6. train station |
| 7. post office | 8. sidewalk      |
| 9. bridge      | 10. theater      |

B. Point and say the words.

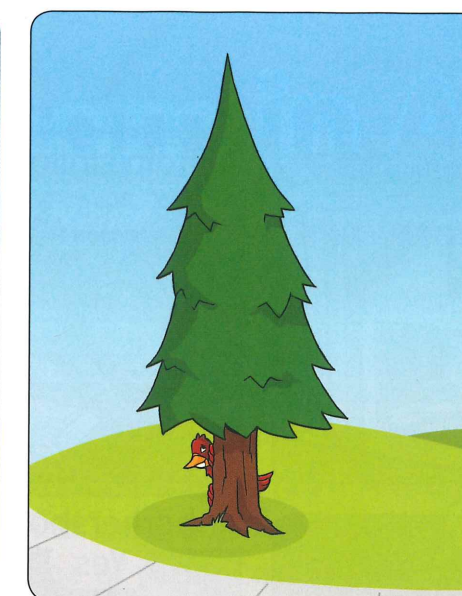
C.  <sup>CD1</sup> Listen and point.



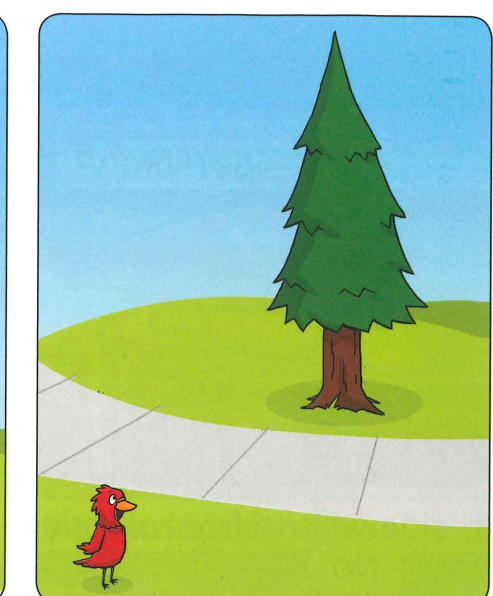
A.  <sup>CD1</sup> Listen and repeat.



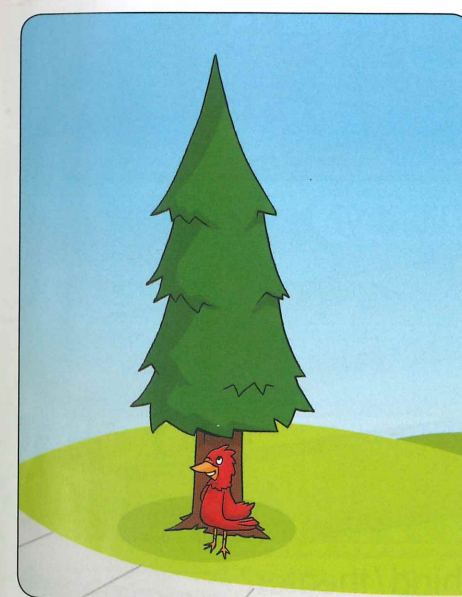
1. beside



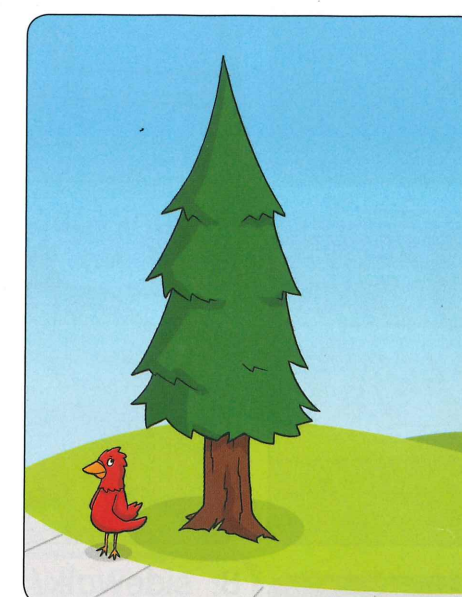
2. behind



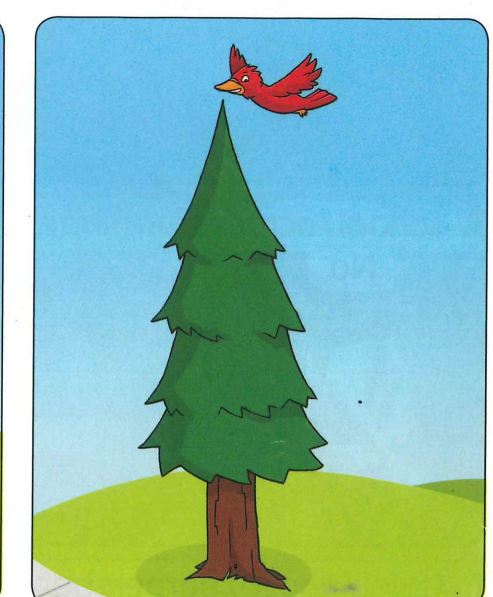
3. across from



4. in front of



5. near



6. above

B.  <sup>CD1</sup> Listen and repeat.



Was there a library beside the post office?

Yes,		was.
No,	there	wasn't.

C.  <sup>CD1</sup> Look at page 2. Listen and point.



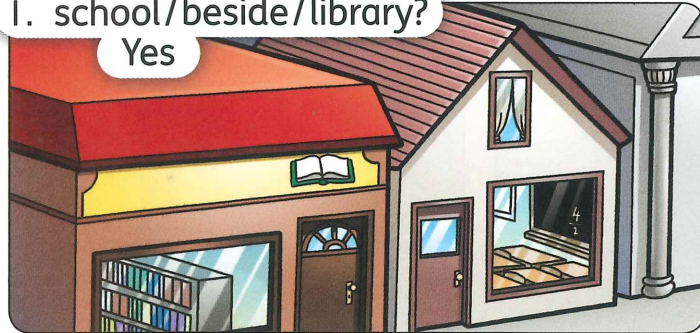
A.  <sup>CD1</sup> Listen and repeat. Then practice with a partner.

Was there a bank near the school?

Yes, there was.

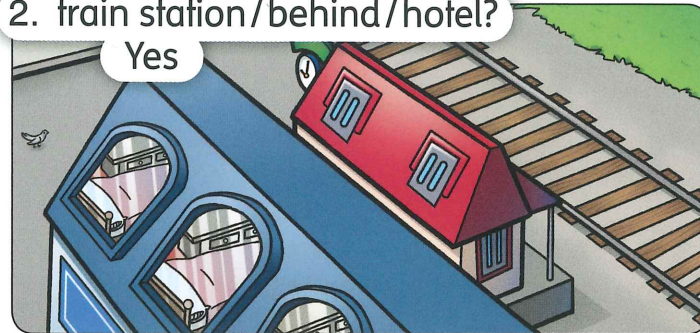
1. school/beside/library?

Yes



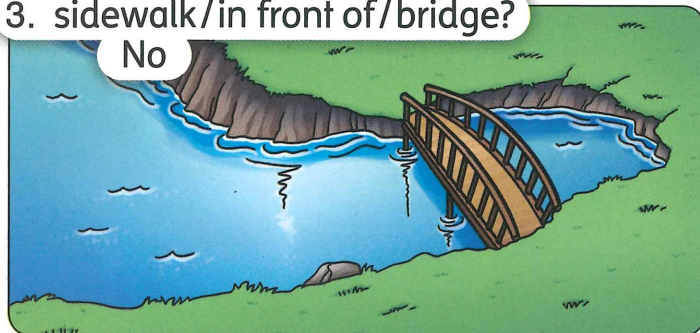
2. train station/behind/hotel?

Yes



3. sidewalk/in front of/bridge?

No



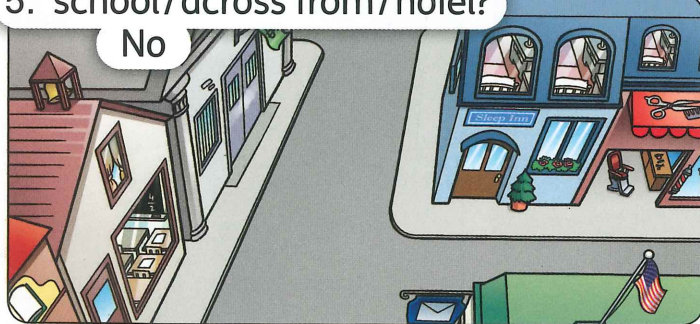
4. barbershop/near/post office?

Yes



5. school/across from/hotel?

No



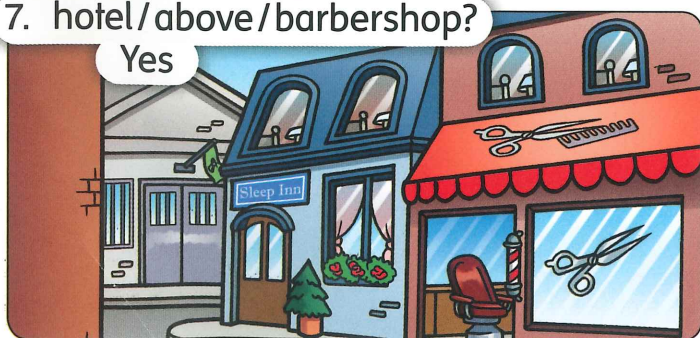
6. bank/above/library?

No



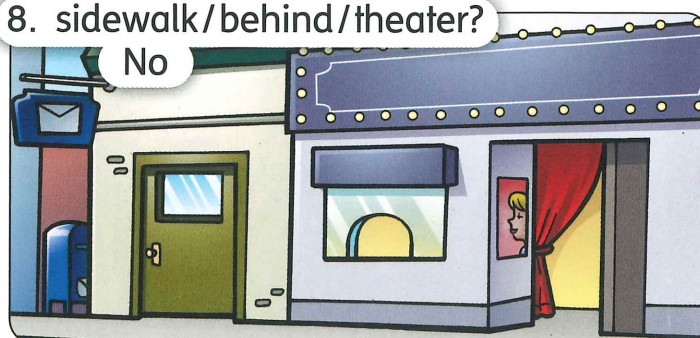
7. hotel/above/barbershop?

Yes



8. sidewalk/behind/theater?

No



B. Look at page 2. Practice with a partner.

C.  <sup>CD1</sup> **SONG**  Listen and chant.

(See "Yes, There Was! No, There Wasn't!" on page 81.)



A.  <sup>CD1</sup> Listen and read along.

# Ice Cream in America



**W**ho invented ice cream? We don't know, but ice cream has a long history in the United States. In 1843, Nancy Johnson invented the first ice cream churn. The first ice cream factory opened in Baltimore in 1851. A man in St. Louis made the first ice cream cone in 1896. Ice cream is now one of America's favorite desserts.

The first ice cream shop opened in New York in 1876. Now there is an ice cream shop in every town, and you can buy ice cream at every grocery store. You can find a lot of flavors, from tomato to pickle. America's favorite flavors are vanilla and chocolate. What's your favorite?

## New Words

invent	history
first	churn
factory	cone
every	a lot of
flavor	vanilla

B.  <sup>CD1</sup> Listen and circle True or False.

1. True False    2. True False    3. True False    4. True False

C. Read the question. Write the answer.

1. When did the first ice cream shop open? \_\_\_\_\_
2. Who invented the first ice cream churn? \_\_\_\_\_
3. Where did the first ice cream factory open? \_\_\_\_\_
4. What flavors are America's favorites? \_\_\_\_\_